

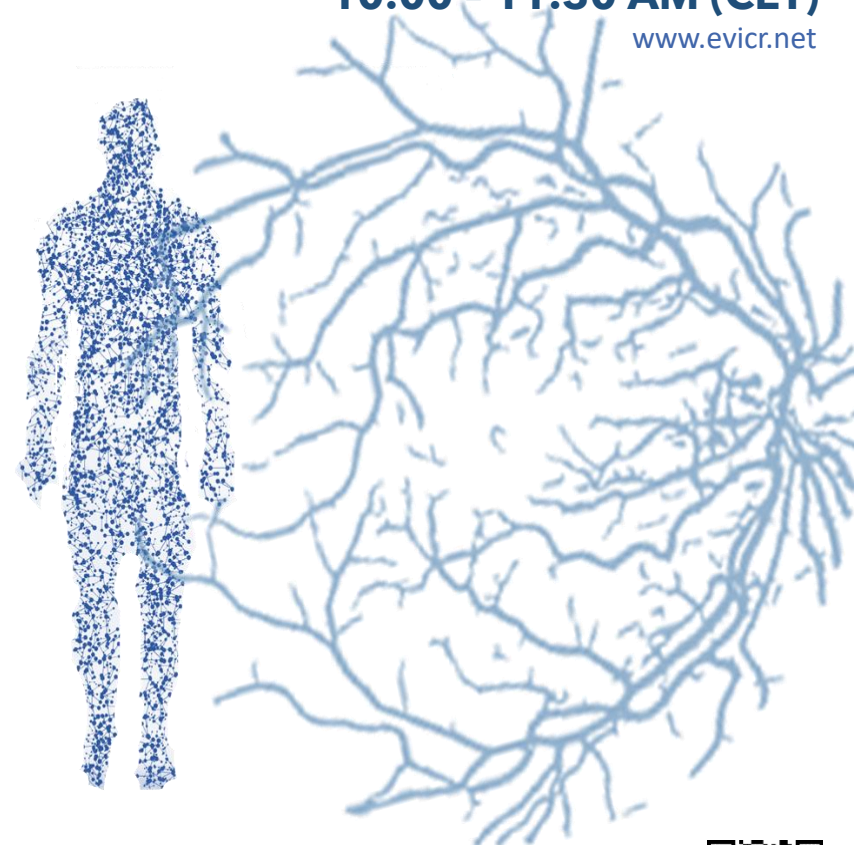
Seeing the body through the eye

- 10:00 Introduction
José Cunha-Vaz (EVICR.net CS01)
- 10:05 Why are new developments in diabetic eye screening relevant to all in diabetes care?
Peter Scanlon (EVICR.net CS53)
- 10:20 What does the eye reveal about systemic disease?
Tunde Peto (EVICR.net CS35)
- 10:35 How can retinal imaging contribute to management of cardiovascular disease?
Rafael Simó (EVICR.net CS74)
- 10:50 What does retinal ischaemia mean for managing other end-organ disease?
Stela Vujosevic (EVICR.net CS127)
- 11:05 Looking for an Automated Alternate to the ETDRS Classification
José Cunha-Vaz (EVICR.net CS01)
- 11:20 Wrap up

FRIDAY, NOVEMBER 19TH 2021

10:00 - 11:30 AM (CET)

www.evicr.net



FREE REGISTRATION HERE
<https://tinyurl.com/EVICRnetEyeSymposium>

